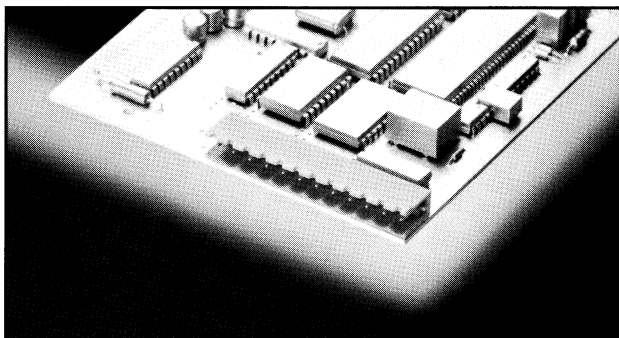





EDSTLZ 950/OE



2-24 poles, Spacing 5.08 mm
insert required no. of poles **
How to order see page 6

Ratings:

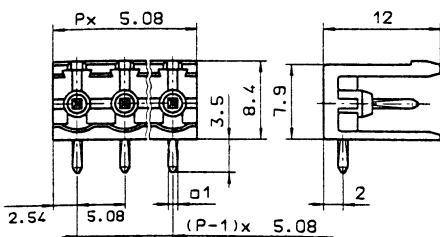
	 UL1059	 CSA 22.2 No. 158	 DIN VDE 0627
Rated Voltage	250 VB	300 VB	250 V
Rated Current	15 A	16 A	12 A (T60)
Test Voltage			2.21 kV

Dimensions

Spacing	5.08 mm
PCB Hole Diameter	1.4 mm

Materials

Insulating Material	PA
Flammability Class	UL94 V-0
Temperature Range	-30°C/+105°C
Contact Pin	Cu
Color	Green



P = No. of Poles